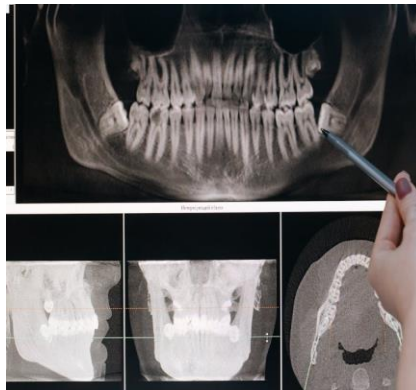


## Wisdom Teeth and Age – Is It Too Late to Get Them Removed



Wisdom teeth can be a source of discomfort and dental complications, but many people delay their removal due to fear, cost concerns, or the belief that it might not be necessary. However, is there an age limit for wisdom tooth extraction? If you've been wondering whether it's too late to remove your wisdom teeth, this guide will provide the answers.

### Is There an Ideal Age for Wisdom Tooth Removal?

Dentists typically recommend removing wisdom teeth during the late teens or early twenties. At this stage, the roots are not yet fully developed, making extraction easier and recovery quicker. However, this doesn't mean that older adults cannot or should not undergo [wisdom tooth removal in Melbourne](#).

### What Happens If Wisdom Teeth Are Left Untreated?

Wisdom teeth don't always cause immediate problems, but as you age, they can lead to:

- **Impaction:** When wisdom teeth remain trapped beneath the gums, leading to pain, swelling, and infections.
- **Crowding and Misalignment:** Wisdom teeth can push against other teeth, causing shifts in alignment.
- **Tooth Decay and Gum Disease:** Partially erupted wisdom teeth are difficult to clean, making them prone to cavities and gum infections.
- **Cyst Formation:** In rare cases, cysts can develop around impacted wisdom teeth, potentially damaging the surrounding bone and teeth.

If you experience any of these issues, removing your wisdom teeth—even later in life—can prevent further complications.

### Can Adults Get Their Wisdom Teeth Removed?

Yes, adults of any age can have their wisdom teeth extracted. While the healing process may take slightly longer compared to younger individuals, modern techniques ensure a safe and effective procedure. If you're considering extraction, it's best to consult a clinic offering the [best wisdom teeth removal in Melbourne](#) to assess your specific situation.

## What to Expect During and After the Procedure?

The process of wisdom tooth extraction for adults is similar to that for younger patients:

1. **Consultation:** A dentist will assess your wisdom teeth through X-rays to determine if removal is necessary.
2. **Anaesthesia:** Depending on the complexity, local, sedation, or general anaesthesia may be used.
3. **Extraction:** The procedure involves removing the teeth, sometimes requiring minor incisions.
4. **Recovery:** Swelling and discomfort are normal for a few days, with full healing taking a few weeks.

Older adults may experience slightly longer recovery times, but following post-operative care instructions helps ensure smooth healing.

## How Much Does Wisdom Teeth Removal Cost?

One concern for many adults is the cost of extraction. The [wisdom teeth removal price in Melbourne](#) varies based on factors such as the number of teeth removed, complexity, and type of anaesthesia used. Many dental clinics offer financing options to make the procedure more affordable.

## Final Thoughts

It's never too late to have your wisdom teeth removed if they're causing problems. Whether you're in your 30s, 40s, or beyond, seeking professional advice can help prevent long-term dental complications. If you're experiencing discomfort or considering extraction, consult a specialist to determine the best course of action.

The author is a dentist committed to helping patients achieve optimal oral health. Based in Sydney, he offers affordable wisdom teeth removal, preventative care, and restorative dentistry. Visit <https://wisdomteethremoval.com.au/wisdom-teeth-removal-melbourne/> to learn more about their service.