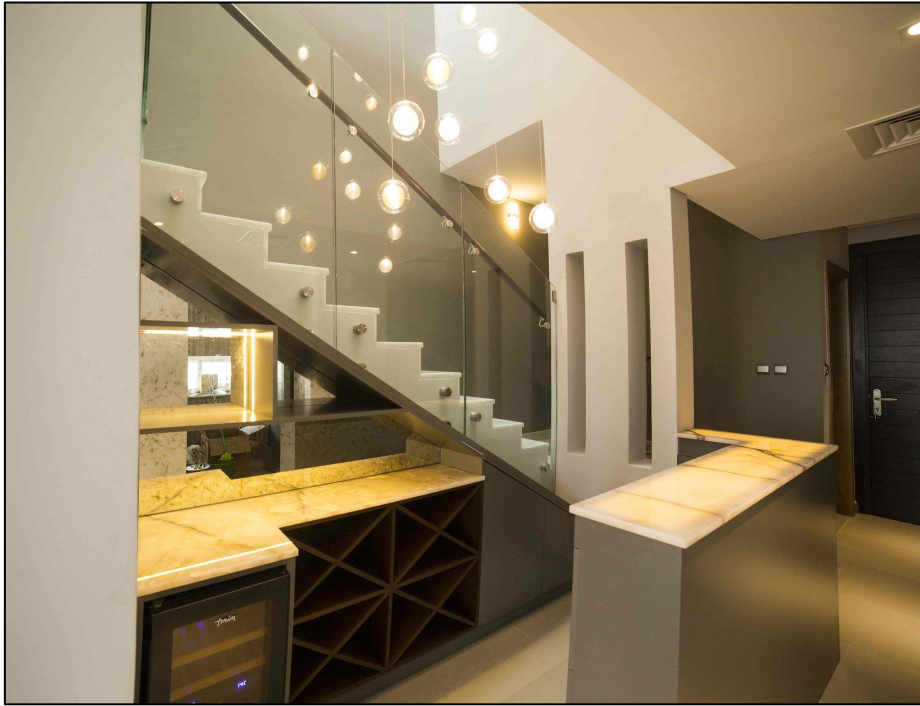


Luxury Penthouse Design and House Renovation on Pine Tree Lane, Dubai



Pine Tree Lane, nestled in the heart of Dubai, has become synonymous with luxury living. Known for its stunning architectural masterpieces, this exclusive neighborhood is home to some of the most opulent penthouse apartments in the city. As demand for high-end living spaces continues to rise, so does the trend of sophisticated **penthouse apartment design** and house renovation. Let's explore how these key elements blend to redefine luxury living on Pine Tree Lane.

Penthouse Apartment Design: A New Era of Elegance

Penthouse apartments in Dubai are known for their extravagant features, offering unparalleled views of the city skyline and the Arabian Gulf. The design of these spaces goes beyond simple aesthetics; it combines functionality, modernity, and a luxurious ambiance that speaks to the city's wealth and innovation.

At Pine Tree Lane, penthouse apartments are designed to maximize space, with floor-to-ceiling windows that flood the rooms with natural light while providing breathtaking panoramic views. Open-plan living areas are a common feature, with seamless transitions between indoor and outdoor spaces, allowing residents to enjoy Dubai's year-round sunshine.

High ceilings, grand terraces, and private rooftop pools are key elements in these designs, enhancing the feeling of exclusivity.

The use of luxurious materials like marble, gold accents, and exotic woods adds sophistication to the penthouse interiors. Designers often incorporate state-of-the-art technology, such as automated lighting, climate control systems, and integrated smart home features, to offer residents both comfort and convenience. The layout and design of these penthouses are tailored to cater to the individual tastes of discerning buyers, ensuring that no two homes are alike.

House Renovation: Modernizing Tradition with Contemporary Flair

House renovation projects on Pine Tree Lane are equally impressive, as homeowners seek to modernize their properties while preserving their unique character. Many luxury homes in the area were built with traditional Arabian architectural influences, featuring grand courtyards, intricate detailing, and rich textures. As renovation trends shift toward a more contemporary approach, designers are finding ways to blend these traditional elements with modern design principles.

Renovation efforts typically focus on expanding living spaces, creating more open and fluid interiors that mirror the penthouse apartment design. Updating kitchens, bathrooms, and living areas with modern fixtures, sleek finishes, and smart appliances is a priority for many homeowners. However, retaining some of the original design elements—such as arched windows, decorative tiles, or ornate woodwork—keeps the home's authentic charm intact.

In addition to interior upgrades, house renovation projects often include landscaping and outdoor living space improvements. Infinity pools, outdoor lounges, and lush gardens are becoming essential features for homes in Pine Tree Lane, as they offer a serene escape from the bustling city while adding a resort-like feel to the property.

Luxury Penthouse Interiors: The Pinnacle of Style and Comfort

Designing a luxury penthouse interior on Pine Tree Lane is all about creating a perfect balance between opulence and comfort. Custom-made furniture, bespoke lighting, and hand-picked art pieces contribute to the lavish ambiance, while cozy textures and plush furnishings ensure the space feels inviting.

Interior designers often choose neutral tones for the base palette—think whites, grays, and beige—to create a clean, elegant backdrop. These colors are then accentuated with bold pops of color, luxurious fabrics, and statement pieces. Crystal chandeliers, velvet sofas, and marble coffee tables elevate the sophistication of the interiors, while built-in fireplaces and expansive walk-in closets provide both comfort and practicality.

Art plays a significant role in luxury penthouse interiors, with curated collections often adorning the walls. Whether it's contemporary pieces from renowned Middle Eastern artists or sculptures from international galleries, art adds a personal touch and serves as a conversation starter in any home.

The Future of Luxury Living in Dubai

As Pine Tree Lane continues to attract affluent residents from around the world, the future of luxury living in Dubai is brighter than ever. Both penthouse apartment design and house renovation trends are pushing the boundaries of architecture and interior design, creating living spaces that are not only beautiful but also innovative and highly functional.

Whether it's a sleek, modern luxury penthouse design with awe-inspiring views or a renovated mansion that blends tradition with contemporary luxury, Pine Tree Lane stands as a symbol of Dubai's status as a global hub for luxury real estate. As the city continues to grow and evolve, so too will the demand for homes that offer a unique and exceptional living experience.

In conclusion, Pine Tree Lane is a prime location for those seeking the ultimate in luxury living. Whether you are looking to design a penthouse apartment or renovate a house, the possibilities are endless. With the right vision and a focus on quality, Pine Tree Lane remains one of Dubai's most desirable addresses for homeowners who seek to live in style and comfort.