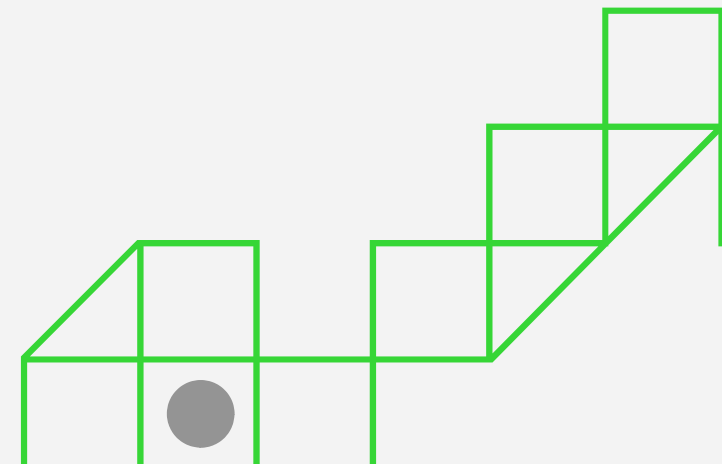
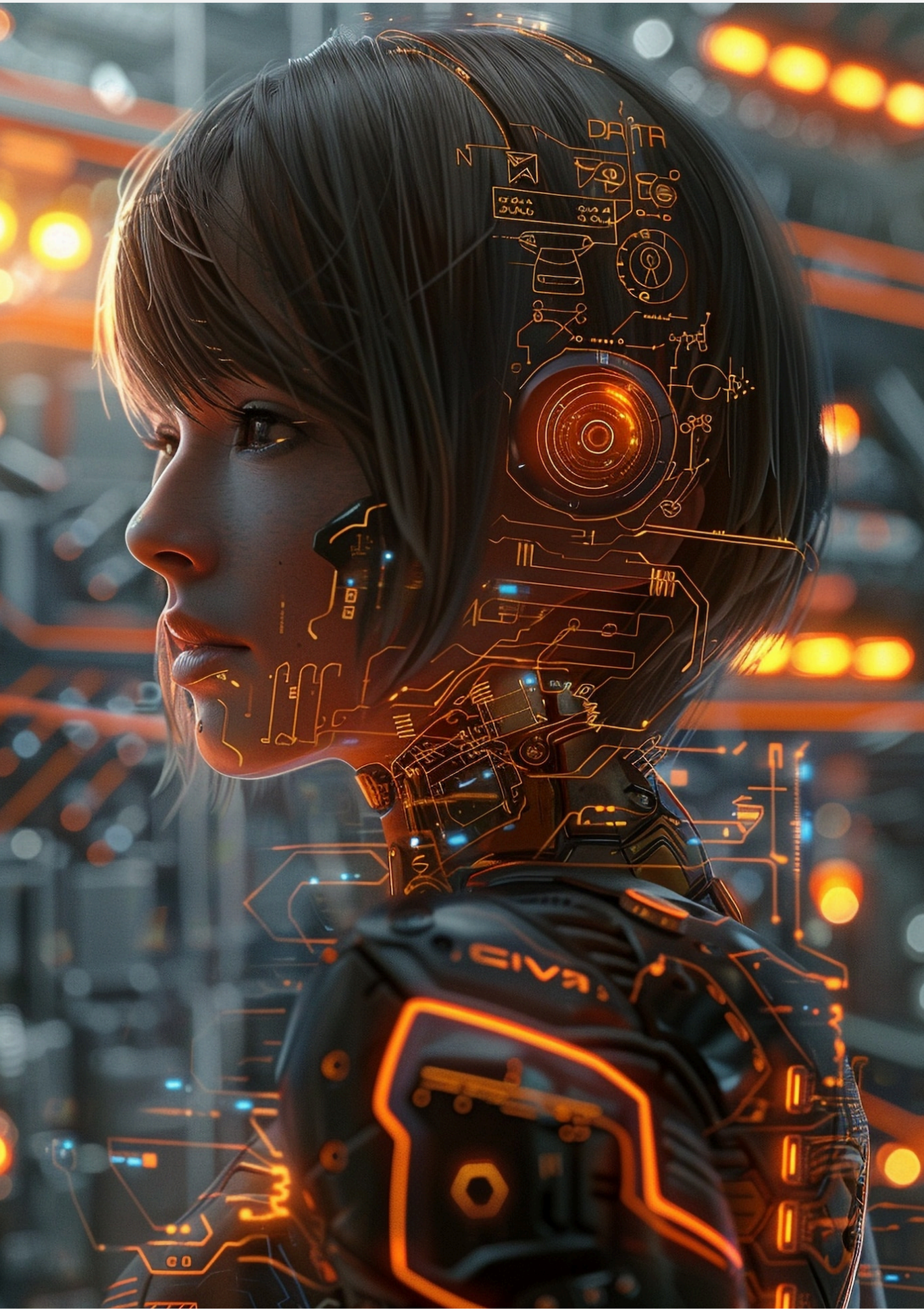


# **Unlocking Potential: The Strategic Advantages of Prompt Engineering in AI Systems**

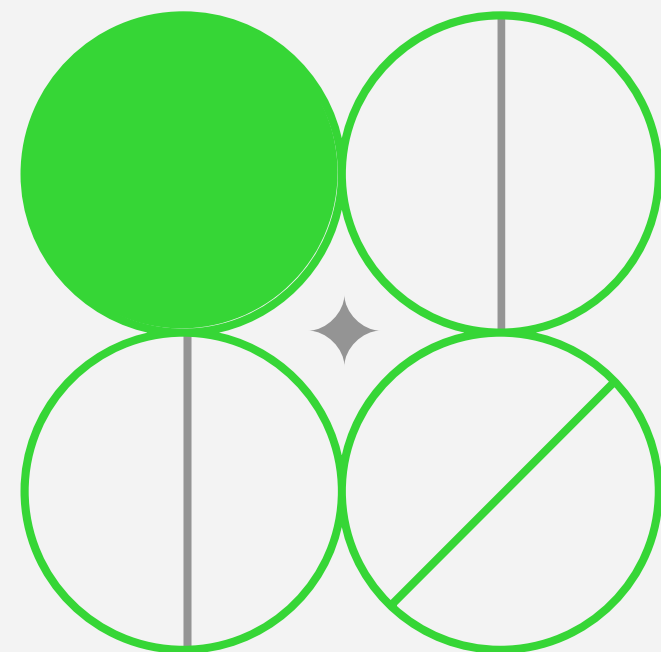
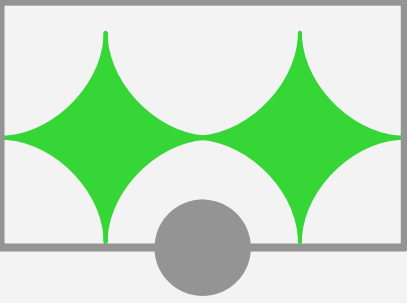




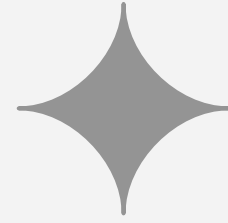


# Introduction to Prompt Engineering

Prompt engineering is a crucial aspect of developing effective AI systems. It involves crafting precise inputs to elicit desired outputs from AI models. This presentation explores the **strategic advantages** of prompt engineering and its role in unlocking the full potential of AI technologies.

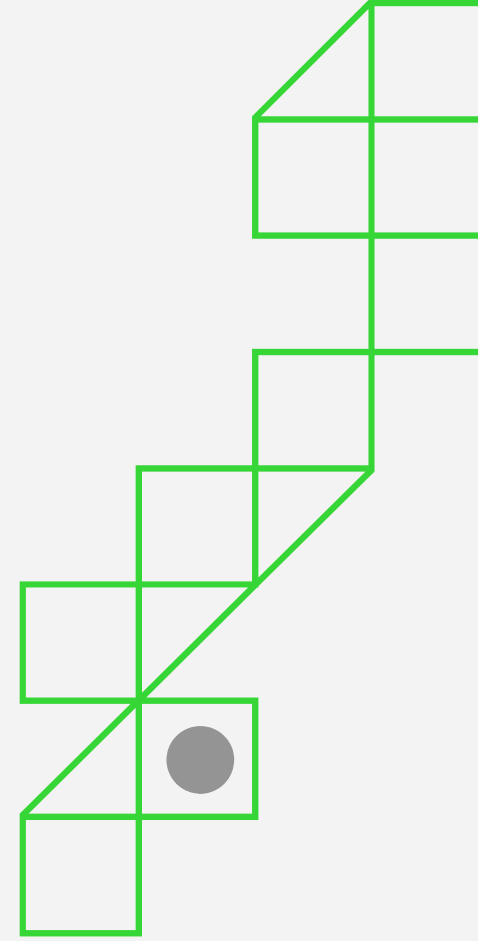






# Understanding Prompt Engineering

Prompt engineering revolves around the art of designing inputs that guide AI behavior. By utilizing **specific language** and context, engineers can significantly influence the model's responses, leading to more **accurate** and **relevant** outputs tailored to user needs.

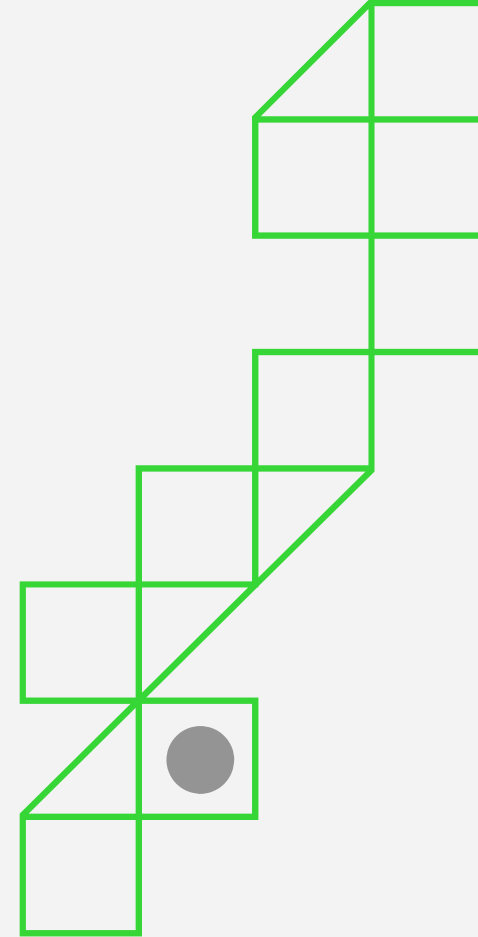






# Enhancing Model Performance

Effective prompt engineering can dramatically enhance **model performance**. By optimizing prompts, engineers can reduce ambiguity, improve **response quality**, and ensure that AI systems are aligned with user expectations, ultimately leading to a more **satisfactory user experience**.





# COST EFFICIENCY IN DEVELOPMENT

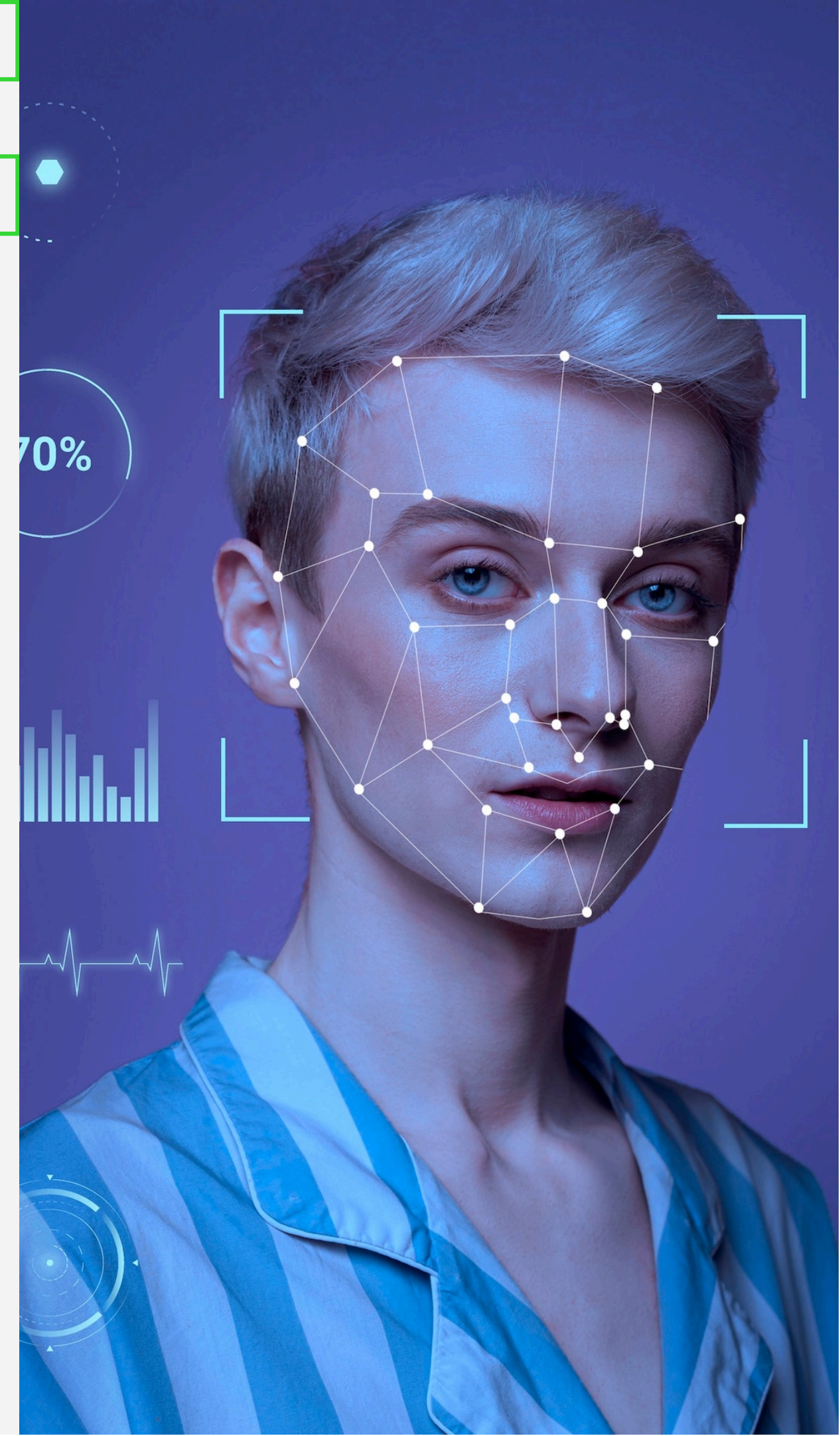
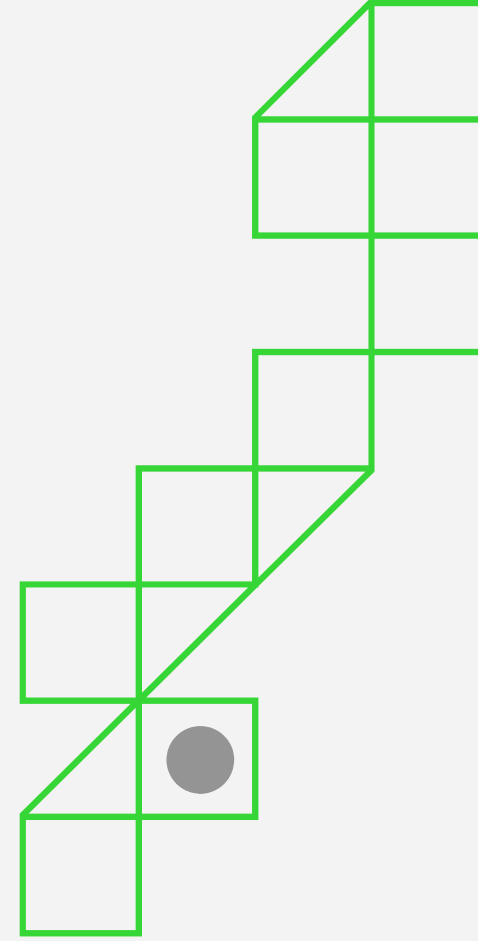
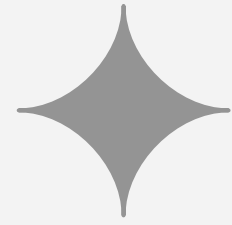
Investing in prompt engineering can lead to significant **cost savings** in AI development. By minimizing the need for extensive retraining and adjustments, organizations can leverage existing models more effectively, streamlining the development process and reducing **time-to-market**.





# Improving User Engagement

Well-crafted prompts can enhance **user engagement** with AI systems. By providing more relevant and personalized interactions, prompt engineering fosters a deeper connection between users and technology, encouraging ongoing usage and **satisfaction**.

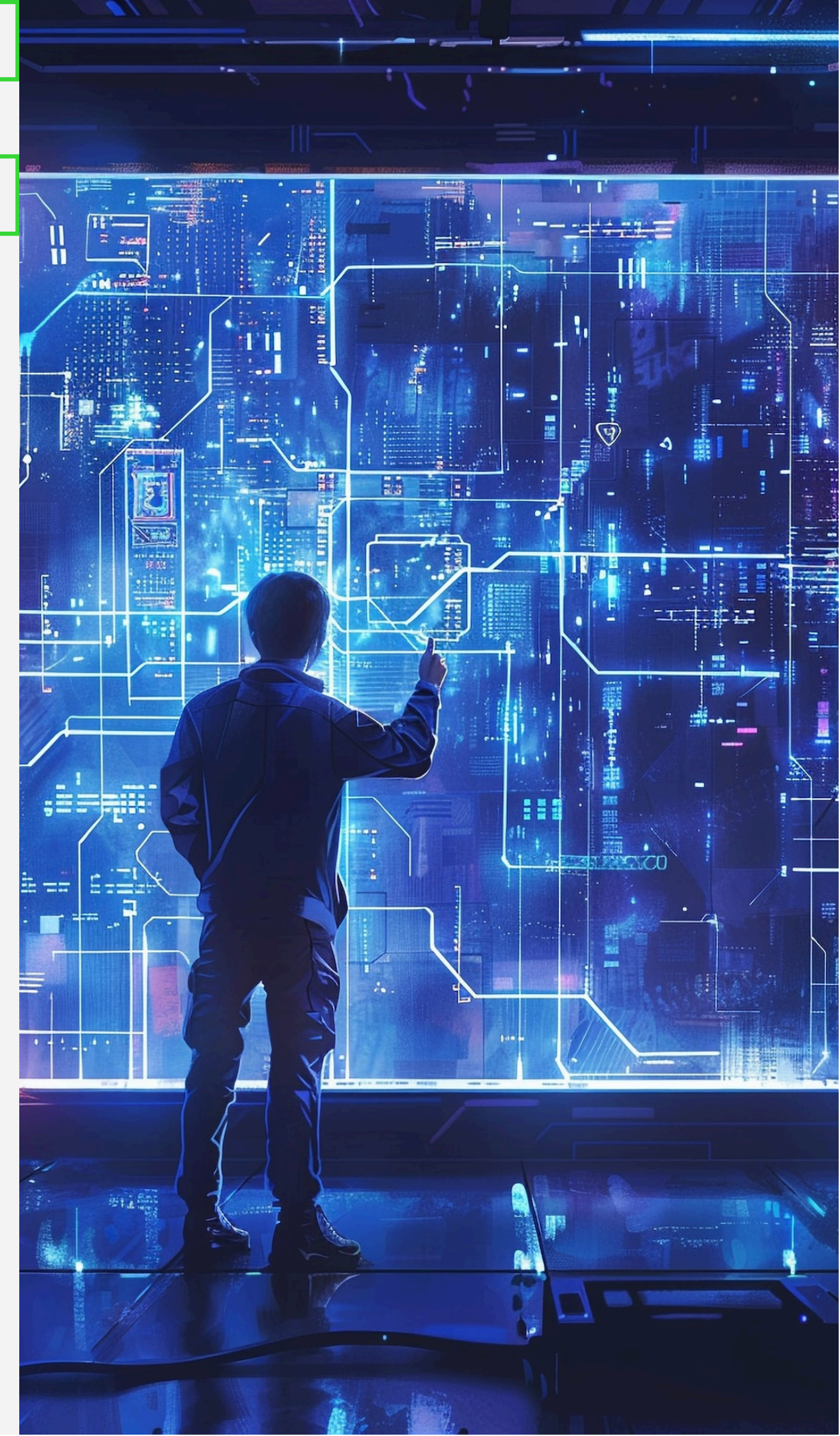






# Scalability and Adaptability

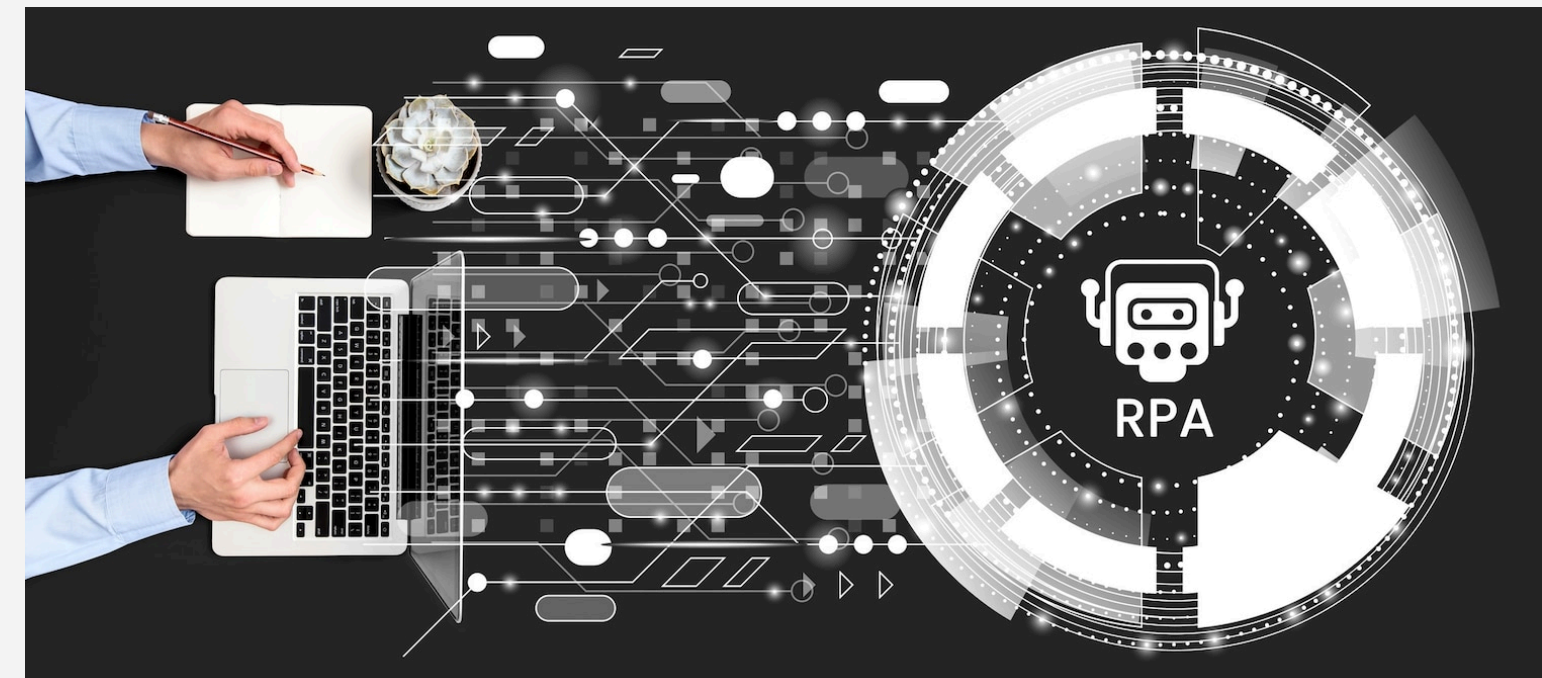
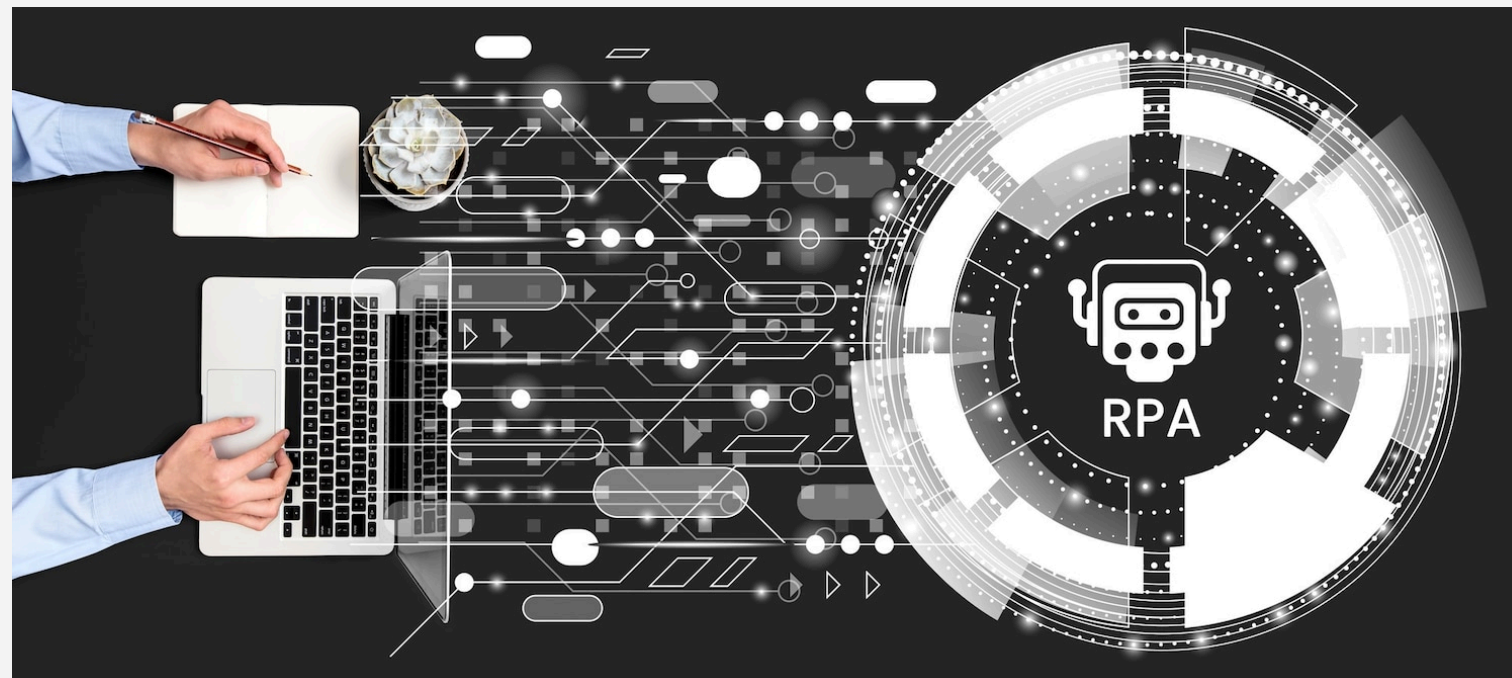
Prompt engineering supports the **scalability** and adaptability of AI systems. By adjusting prompts, organizations can cater to diverse user needs and rapidly evolve their applications, ensuring that they remain **competitive** in a fast-paced technological landscape.





# REAL-WORLD APPLICATIONS

From customer support to content generation, prompt engineering has numerous **real-world applications**. By tailoring prompts to specific scenarios, businesses can unlock new capabilities and enhance the effectiveness of AI solutions across various sectors.



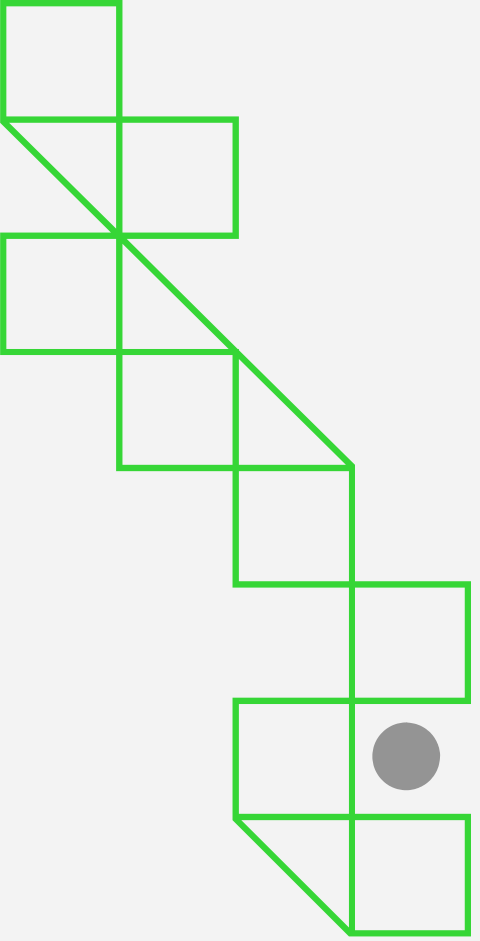




## CONCLUSION: FUTURE OF PROMPT ENGINEERING

In conclusion, prompt engineering is a vital skill for maximizing the potential of AI systems. As AI continues to evolve, the strategic advantages of effective prompt design will play a pivotal role in shaping the future of **intelligent technologies** and their applications.





# Thanks!

**ANY QUESTIONS?**

[sales@solguruz.com](mailto:sales@solguruz.com)

+91 9173042977

<https://solguruz.com/>

