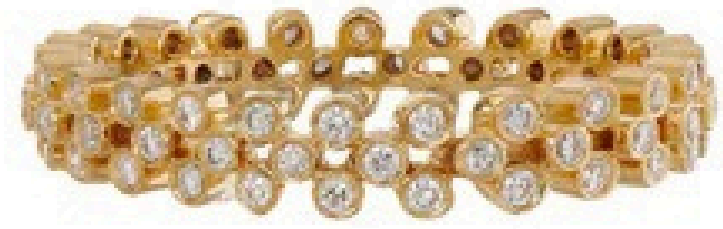


JOHANN PAUL
FINE JEWELRY



SHOP NOW

www.johannpaulfinejewelry.com



OUR BLOG

TOP DIAMOND
ENGAGEMENT RING
TRENDS FOR 2024

www.johannpaulfinejewelry.com



IN THE EVER-EVOLVING WORLD OF **DIAMOND ENGAGEMENT RINGS**, 2024 BRINGS FORTH A MYRIAD OF CAPTIVATING TRENDS THAT ARE SURE TO DAZZLE AND DELIGHT. AS A LEADING AUTHORITY IN THE REALM OF FINE JEWELRY, WE ARE EXCITED TO PRESENT THE TOP DIAMOND ENGAGEMENT RING TRENDS FOR 2024. FROM TIMELESS CLASSICS TO MODERN MARVELS, THESE TRENDS ARE POISED TO CAPTURE THE HEARTS OF COUPLES SEEKING THE PERFECT SYMBOL OF THEIR LOVE AND COMMITMENT.

SUSTAINABLE SPARKLE: ETHICAL DIAMONDS

IN 2024, ETHICAL CONSIDERATIONS WILL CONTINUE TO PLAY A SIGNIFICANT ROLE IN THE DIAMOND INDUSTRY. MORE COUPLES ARE OPTING FOR ETHICALLY SOURCED DIAMONDS, WHICH ARE MINED AND PROCESSED IN A WAY THAT MINIMIZES ENVIRONMENTAL IMPACT AND ENSURES FAIR LABOR PRACTICES. ETHICAL DIAMONDS ARE NOT ONLY SOCIALLY RESPONSIBLE BUT ALSO EXUDE A UNIQUE CHARM, KNOWING THAT THEY HAVE BEEN SOURCED WITH CARE AND INTEGRITY.

VINTAGE REVIVAL: ART DECO INFLUENCES

ART DECO-INSPIRED DESIGNS ARE MAKING A COMEBACK IN 2024, INCLUDING **CLASSIC ENGAGEMENT RINGS** WITH A SENSE OF TIMELESS ELEGANCE AND SOPHISTICATION. CHARACTERIZED BY GEOMETRIC SHAPES, BOLD COLORS, AND INTRICATE DETAILS, ART DECO RINGS ARE PERFECT FOR COUPLES WHO APPRECIATE THE GLAMOUR AND ALLURE OF THE ROARING TWENTIES. THESE VINTAGE-INSPIRED PIECES ADD A TOUCH OF NOSTALGIA TO MODERN-DAY ROMANCE.

COLORFUL CAPTIVATION: COLORED GEMSTONES

WHILE DIAMONDS REMAIN A CLASSIC CHOICE FOR ENGAGEMENT RINGS, COLORED GEMSTONES ARE GAINING POPULARITY IN 2024. FROM VIBRANT SAPPHIRES TO ROMANTIC RUBIES, COLORED GEMSTONES ADD A POP OF COLOR AND PERSONALITY TO TRADITIONAL RING SETTINGS. COUPLES ARE EMBRACING THESE COLORFUL STONES AS A WAY TO EXPRESS THEIR INDIVIDUALITY AND CREATE A TRULY UNIQUE AND PERSONALIZED RING.

SLEEK AND CHIC: MINIMALIST DESIGNS

MINIMALISM CONTINUES TO BE A MAJOR TREND IN 2024, EXTENDING TO ENGAGEMENT RING DESIGNS. SLEEK, SIMPLE, AND UNDERSTATED, MINIMALIST RINGS FEATURE CLEAN LINES AND UNCOMPLICATED SETTINGS THAT HIGHLIGHT THE BEAUTY OF THE DIAMOND. THESE TIMELESS DESIGNS ARE PERFECT FOR COUPLES WHO PREFER A MORE SUBTLE AND REFINED AESTHETIC.

CUSTOM CREATIONS: PERSONALIZED RINGS

IN 2024, CUSTOM-DESIGNED ENGAGEMENT RINGS ARE ON THE RISE AS COUPLES SEEK TO CREATE A RING THAT IS AS UNIQUE AS THEIR LOVE STORY. FROM INTRICATE ENGRAVINGS TO HIDDEN SYMBOLS, CUSTOM RINGS ALLOW COUPLES TO INCORPORATE PERSONAL TOUCHES THAT HOLD SPECIAL MEANING. THESE ONE-OF-A-KIND CREATIONS ARE A TRUE REFLECTION OF THE COUPLE'S LOVE AND COMMITMENT TO EACH OTHER.

TIMELESS ELEGANCE: VINTAGE-INSPIRED SETTINGS

VINTAGE-INSPIRED SETTINGS ARE GAINING POPULARITY IN 2024, OFFERING A SENSE OF TIMELESS ELEGANCE AND SOPHISTICATION. THESE SETTINGS OFTEN FEATURE INTRICATE DETAILING, SUCH AS FILIGREE WORK AND MILGRAIN EDGING, WHICH HARKEN BACK TO A BYGONE ERA OF CRAFTSMANSHIP.

UNIQUE SHAPES: FANCY CUT DIAMONDS

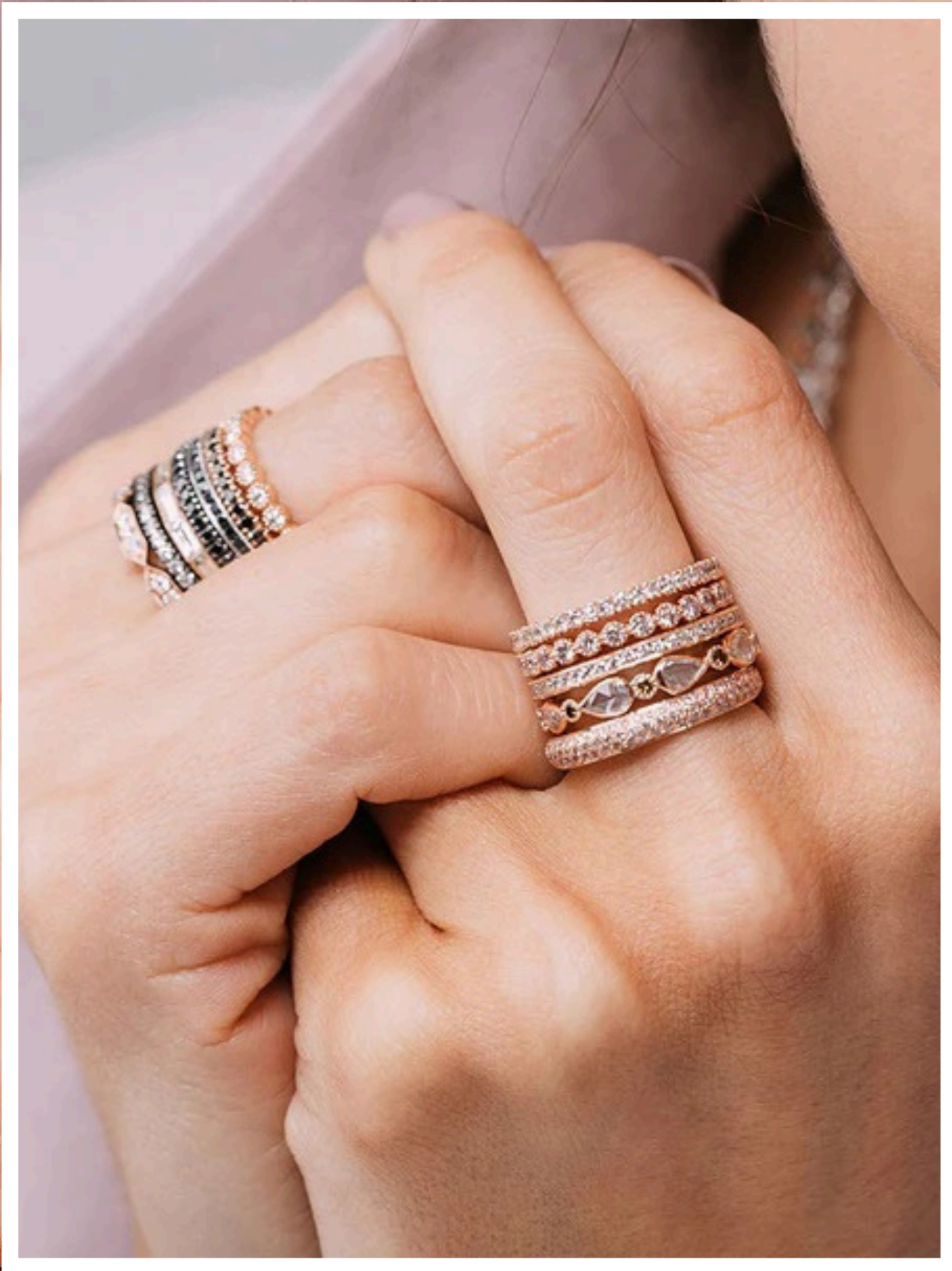
WHILE ROUND BRILLIANT DIAMONDS CONTINUE TO BE A POPULAR CHOICE FOR ENGAGEMENT RINGS, FANCY-CUT DIAMONDS ARE MAKING A SPLASH IN 2024. FROM ELEGANT OVAL SHAPES TO MODERN MARQUISE CUTS, FANCY-CUT DIAMONDS OFFER A UNIQUE AND EYE-CATCHING ALTERNATIVE TO TRADITIONAL ROUND DIAMONDS. THESE FANCY SHAPES ALLOW COUPLES TO EXPRESS THEIR STYLE AND CREATE A RING THAT TRULY STANDS OUT FROM THE CROWD.

MIXED METALS: TWO-TONE DESIGNS

TWO-TONE ENGAGEMENT RINGS WILL BE A MAJOR TREND IN 2024, COMBINING THE WARMTH OF ROSE GOLD WITH THE COOLNESS OF WHITE GOLD OR PLATINUM. THIS COMBINATION OF METALS CREATES A STRIKING CONTRAST THAT ADDS DEPTH AND DIMENSION TO THE RING. TWO-TONE DESIGNS ARE PERFECT FOR COUPLES WHO WANT A RING THAT IS BOTH MODERN AND TIMELESS, OFFERING THE BEST OF BOTH WORLDS IN TERMS OF STYLE AND SOPHISTICATION.

NATURE-INSPIRED: ORGANIC ELEMENTS

NATURE-INSPIRED ENGAGEMENT RINGS ARE A BREATH OF FRESH AIR IN 2024, FEATURING ORGANIC ELEMENTS SUCH AS FLORAL MOTIFS, LEAF PATTERNS, AND VINE-LIKE DESIGNS. THESE NATURE-INSPIRED RINGS CAPTURE THE BEAUTY OF THE NATURAL WORLD AND OFFER A WHIMSICAL AND ROMANTIC AESTHETIC. PERFECT FOR OUTDOOR ENTHUSIASTS OR COUPLES WHO SIMPLY APPRECIATE THE BEAUTY OF NATURE, THESE RINGS ARE A STUNNING SYMBOL OF LOVE AND CONNECTION.



JOHANN PAUL
FINE JEWELRY

CONTACT NOW

www.johannpaulfinejewelry.com

415 461 1866